

ANCIENT ROAD TO FUJISAN

Expressed by Red Relief Image Map (RRIM)

Legend

- Yoshida Ascending Route
- Kamakura-kaido Road
- Other old roads
- Fujisan-michi Road
- Doja-michi (Pilgrim) Road

Component parts and Constituent elements

- Tourist information centers and roadside stations, etc
- Tourist information centers
- Michi-no-eki (Roadside Station)
- Bus stops

Otherspots



What is a Red Relief Image Map (RRIM)?
 RRIM is a 3D visualization method on the flat surface map. The RRIM can be used to see cultural features fostered on the natural topography such as relations between lava streams and jinja shrines. The RRIM is practically used for the archaeological prospecting to investigate vestiges of old pilgrimage roads.

"Facing straight" to Fujisan
 This map is intentionally depicted that the south turns to the top unlike a normal map. The Fuji mountaintop is located upper position of this map and you face straight to Fujisan.

The Tourist information centers and the roadside stations, etc

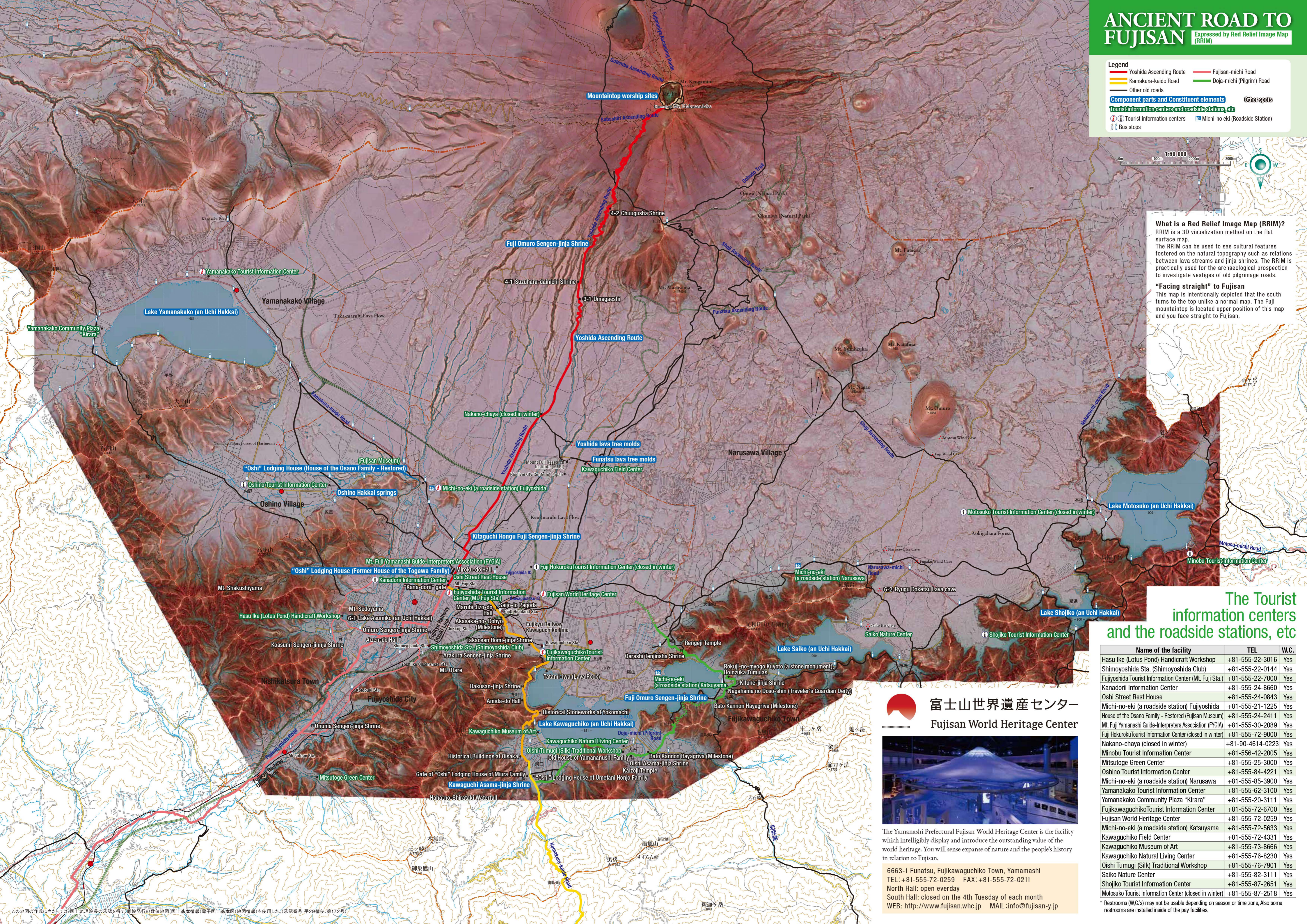
Name of the facility	TEL	W.C.
Hasu Ike (Lotus Pond) Handicraft Workshop	+81-555-22-3016	Yes
Shimoyoshida Sta. (Shimoyoshida Club)	+81-555-22-0144	Yes
Fujiyoshida Tourist Information Center (Mt. Fuji Sta.)	+81-555-22-7000	Yes
Kanadorii Information Center	+81-555-24-8660	Yes
Oshi Street Rest House	+81-555-24-0843	Yes
Michi-no-eki (a roadside station) Fujiyoshida	+81-555-21-1225	Yes
House of the Osano Family - Restored (Fujisan Museum)	+81-555-24-2411	Yes
Mt. Fuji Yamanashi Guide-Interpreters Association (FYGIA)	+81-555-36-2089	Yes
Fuji Hokuroku Tourist Information Center (closed in winter)	+81-555-72-9000	Yes
Nakano-chaya (closed in winter)	+81-90-4614-0223	Yes
Minobu Tourist Information Center	+81-556-42-2005	Yes
Mitsutoge Green Center	+81-555-25-3000	Yes
Oshino Tourist Information Center	+81-555-84-4221	Yes
Michi-no-eki (a roadside station) Narusawa	+81-555-85-3900	Yes
Yamanakako Tourist Information Center	+81-555-62-3100	Yes
Yamanakako Community Plaza "Kirara"	+81-555-20-3111	Yes
Fujikawaguchiko Tourist Information Center	+81-555-72-6700	Yes
Fujisan World Heritage Center	+81-555-72-0259	Yes
Michi-no-eki (a roadside station) Katsuyama	+81-555-72-5633	Yes
Kawaguchiko Field Center	+81-555-72-4331	Yes
Kawaguchiko Museum of Art	+81-555-73-8666	Yes
Kawaguchiko Natural Living Center	+81-555-76-8230	Yes
Oishi Tumugi (Silk) Traditional Workshop	+81-555-76-7901	Yes
Saiko Nature Center	+81-555-82-3111	Yes
Shojiko Tourist Information Center	+81-555-87-2651	Yes
Motosuko Tourist Information Center (closed in winter)	+81-555-87-2518	Yes

富士山世界遺産センター Fujisan World Heritage Center



The Yamanashi Prefectural Fujisan World Heritage Center is the facility which intelligibly display and introduce the outstanding value of the world heritage. You will sense expanse of nature and the people's history in relation to Fujisan.

6663-1 Funatsu, Fujikawaguchiko Town, Yamamashi
 TEL: +81-555-72-0259 FAX: +81-555-72-0211
 North Hall: open everyday
 South Hall: closed on the 4th Tuesday of each month
 WEB: <http://www.fujisan.whc.jp> MAIL: info@fujisan-y.jp



この地図の作成に当たっては、国土地理院長の承認を得て、同院発行の数値地図(国土基本情報)電子国土基本図(地図情報)を使用した。(承認番号 平29情使 第172号)